

[www.adinaindustries.com](http://www.adinaindustries.com)



**ADINA WEICHENG**



**Adina Industries Co.,Ltd  
Zhejiang Adina Industries Technology Co.,Ltd**

Add:RM802,Building D, Shangduan Tower,Yuhuan City,Zhejiang Province,China

Tel: +86 138 6762 7459 +86 177 8729 9186

Tax: +86 576 8990 3136

Web:[www.adinaindustries.com](http://www.adinaindustries.com)

E-mail: [info@adinaindustries.com](mailto:info@adinaindustries.com)



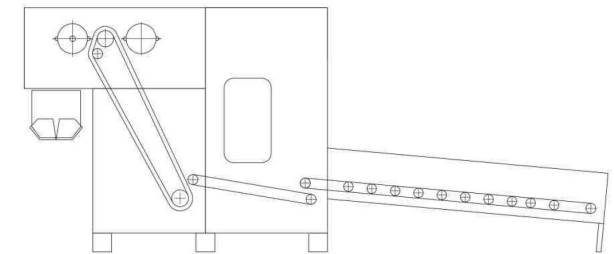
# 目录 CONTENTS

开松混棉部分 OPENING & BLENDING	01/12
成网部分 CARDING、CROSS LAPPER & AIR-LAYER	13/28
加固部分 NEEDLE PUNCHING、SPUNLACE、HOT-MELTING、 SPRAYING & CALENDER	29/42
其他设备 OTHER MACHINES	43/44
生产线示例 INSTALLATION PHOTOGRAPHS	45/72
流程图 FLOW CHART	73/74



## FZKB-电子称重开包机

## FZKB-ELECTRONIC WEIGHING SYSTEM BALE OPENER



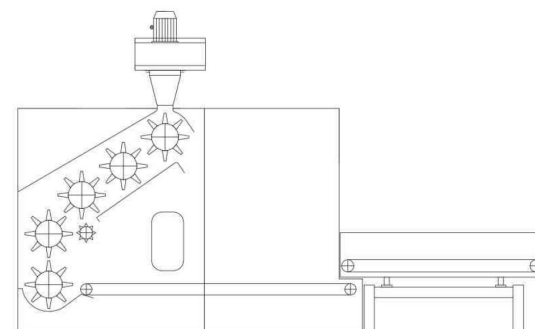
## 技术规格 Technical Data

工作宽幅:	1200mm	1400mm	1600mm
Working width:	1200mm	1400mm	1600mm
产量:	≤250kg/h	≤350kg/h	≤500kg/h
Capacity:	≤250kg/h	≤350kg/h	≤500kg/h

## 产品应用 Application

将各种等级整包或半包料进行初步打开，通过称重系统  
PLC计算进行准确配比，均匀平铺到长帘上。  
Opening the bale, dosing and weighing by PLC system.  
Discharge the fibers onto conveyor.

## FZHB-混棉开包机 FZHB-MIX BALE OPENER



### 产品应用 Application

将多种原料进行不停的混合，混合时间可以根据需要设定，当混合时间到达时自动输送到下级。

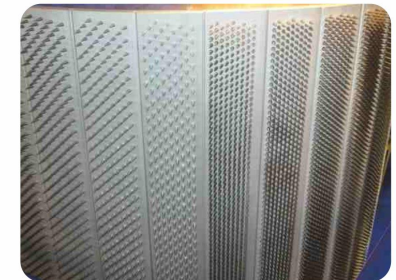
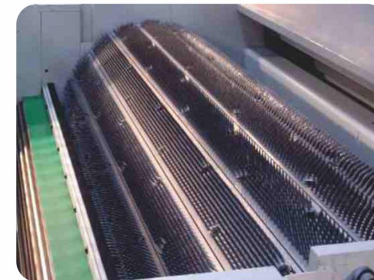
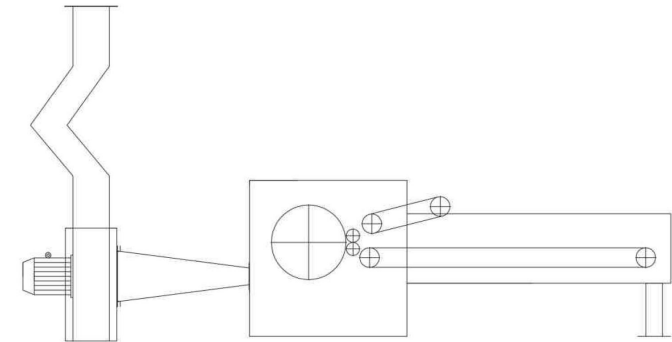
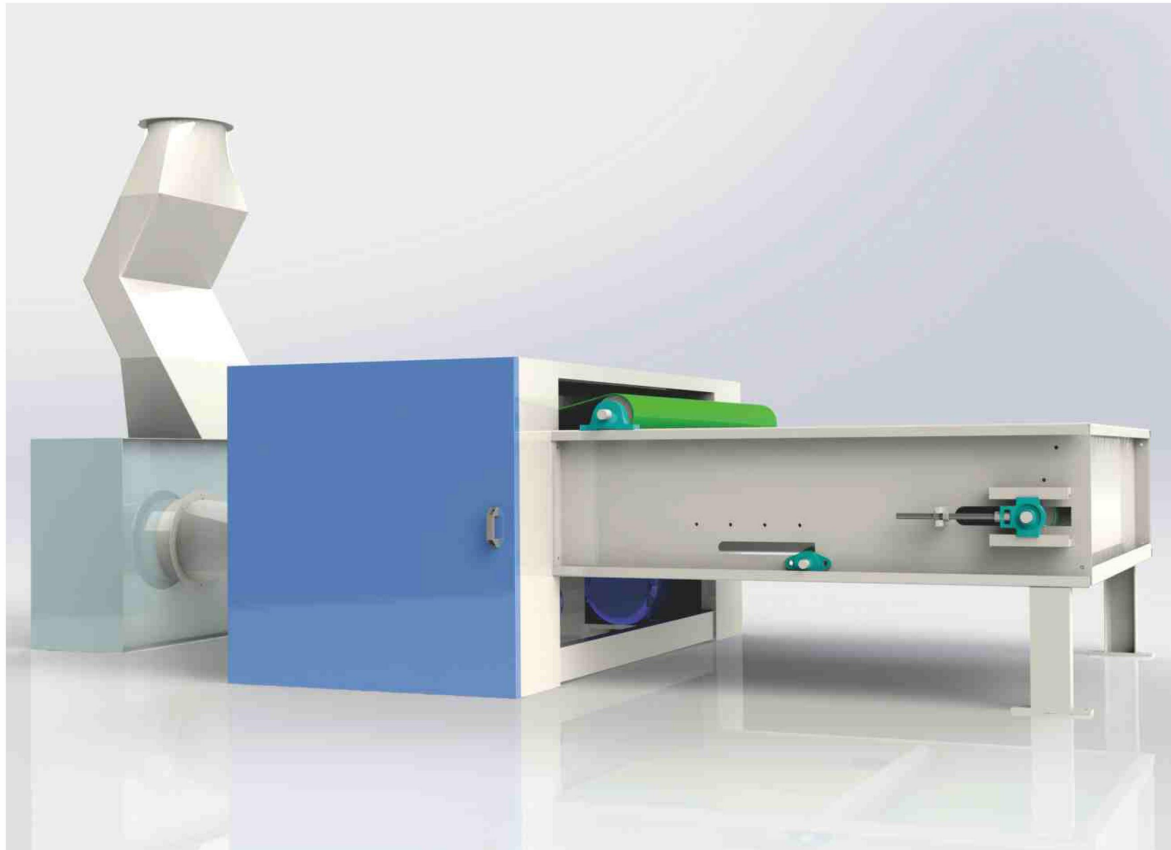
Multiple raw materials go in and keep mixing.  
The mixing time can be set according to the need.  
When the mixing time arrives, it will be automatically sent to the next step.

### 技术规格 Technical Data

工作宽幅: 1400mm 2000mm  
产量: ≤800kg/h ≤1500kg/h

Working width: 1400mm 2000mm  
Capacity: ≤800kg/h ≤1500kg/h

## FZK/I-预开松机 FZK/I-PRE-OPENER



### 技术规格 Technical Data

工作宽幅: 1300mm 1500mm 1800mm  
产量: ≤500kg/h ≤800kg/h ≤1500kg/h

Working width: 1300mm 1500mm 1800mm  
Capacity: ≤500kg/h ≤800kg/h ≤1500kg/h

### 产品应用 Application

对纤维初步开松，并经风机送至下道工序。

Pre-opening the fibers then feed to the next process by air flow.

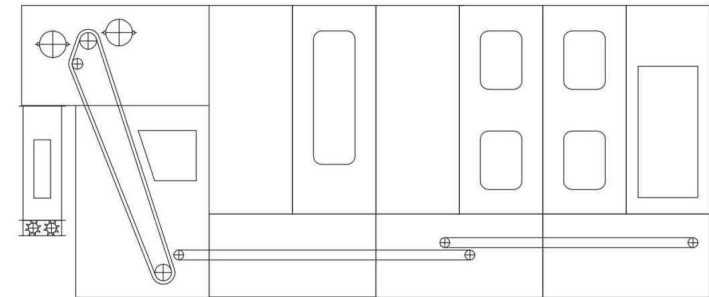
### 主要结构 Main Components

通过PVC帘以及喂入罗拉喂入；  
开松辊采用硬质铝合金针板。

Feed into the machine by PVC apron and feeding roller.  
Opening drum made by aluminium alloy spiked board.

## FZM- 大仓混棉机

### FZM- BIG CABIN BLENDER



#### 产品应用 Application

对各种经过初步开松的纤维进行充分的混合及存储，达到连续生产的作用。

Mix the opened fiber and make sure the continuous production.

#### 技术规格 Technical Data

工作宽度 (mm)	容积	Working width(mm)	Cubage
2000mm	≤25m <sup>3</sup>	2000mm	≤25m <sup>3</sup>
2500mm	≤35m <sup>3</sup>	2500mm	≤35m <sup>3</sup>
3000mm	≤45m <sup>3</sup>	3000mm	≤45m <sup>3</sup>

#### 主要结构 Main Components

采用旋转抛棉装置，使纤维能均匀的分布在大仓内；  
光电控制料位高度；  
PVC输送带和角钉帘通过光电联动控制供棉，使混棉更为均匀。

Rotary separator make the fiber distribute in the blending bin evenly.  
Level control inside the blending bin by the photo-electrical sensor.  
The fiber feeding by PVC conveyor and spiked lattice, controlled by photo-electrical sensor.



**FZK/II-精开松机**  
**FZK/II-FINE OPENER**



**产品应用 Application**

将前道经过初步开松混合的纤维进一步开松混合，并通过输棉风机输送至下道工序。

Make a further opening and blending after the pre-opener then feed to next process by fan.

**技术规格 Technical Data**

工作宽幅: 1300mm 1500mm 1800mm  
产量: ≤500kg/h ≤800kg/h ≤1500kg/h  
装机功率: 7.7kw 9.2kw 10.2kw

Working width: 1300mm 1500mm 1800mm  
Capacity: ≤500kg/h ≤800kg/h ≤1500kg/h  
Installed power: 7.7kw 9.2kw 10.2kw

**FZM/II - 末道棉箱**  
**FZM/II - RESERVE BOX**



**产品应用 Application**

精开棉与气压喂棉箱中间的连续喂棉系统，能提高自动喂棉均匀度。

The continuous feeding system, storing and supplying equipment between the fine opener and air pressure feeding hopper, can improve the feeding uniformity.

**技术规格 Technical Data**

机幅: 1000mm 1500mm  
产量: ≤600kg/h ≤1000kg/h

Width: 1000mm 1500mm  
Capacity: ≤600kg/h ≤1000kg/h



配套设备  
ACCESSORIES



乔式磁铁  
Magent



三通  
Distributor



输棉风机  
Fan



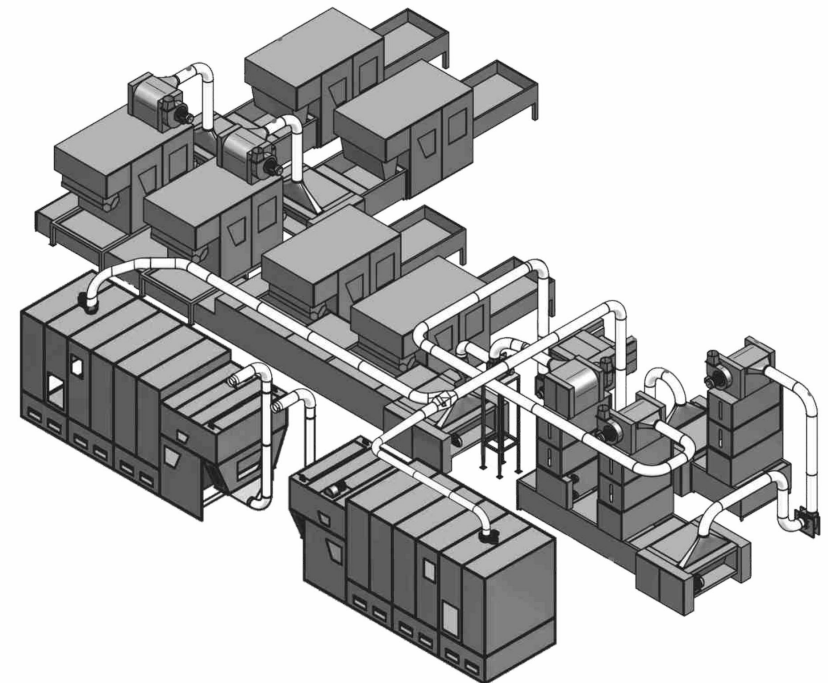
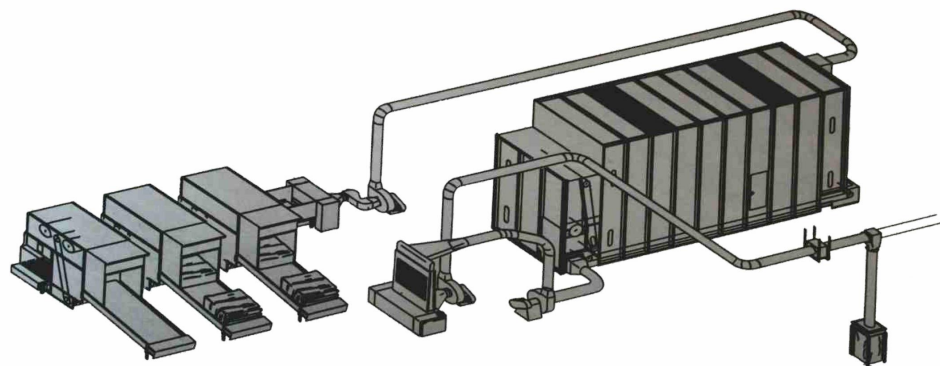
电器操作台  
Control panel



凝棉器  
Air condenser



金属探除器  
Metal magnetic separator



FZG- 震动棉箱

FZG- VIBRATING FEEDING HOPPER



产品应用 Application

将精开松混合后的纤维形成均匀的棉层连续输给下道工序。  
Form the fine opened and blended fiber to the even batt then feed to the next process.

技术规格 Technical Data

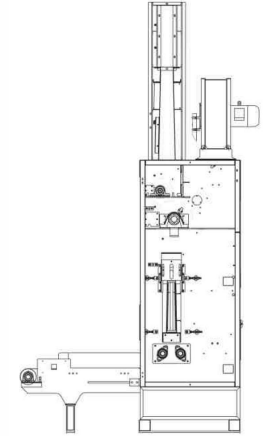
工作宽幅: 1800mm 2300mm  
产量: ≤800kg/h ≤1500kg/h  
Working width: 1800mm 2300mm  
Capacity: ≤800kg/h ≤1500kg/h

主要结构 Main Components

采用过滤棉仓排气;  
通过震动板震动形成均匀的棉层;  
棉层高度和出棉速度可调。  
Fiber collected in the air exhausting cage.  
The vibrate plate contribute to form the even fiber layer.  
The height of the fiber layer and output speed can adjustable.

FZQG-气压棉箱

FZQG-AIR PRESSURE FEEDING HOPPER



产品应用 Application

配套梳理机的高要求喂棉设备。

High quality feeding equipment fitted for carding machine.

技术规格 Technical Data

工作宽幅: 2000mm 2500mm 3000mm 3750mm  
产量: ≤500kg/h ≤800kg/h ≤1000kg/h ≤1300kg/h

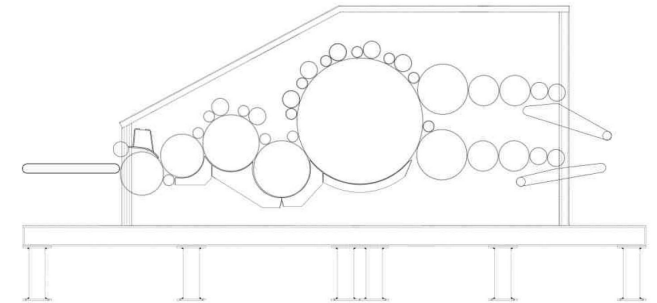
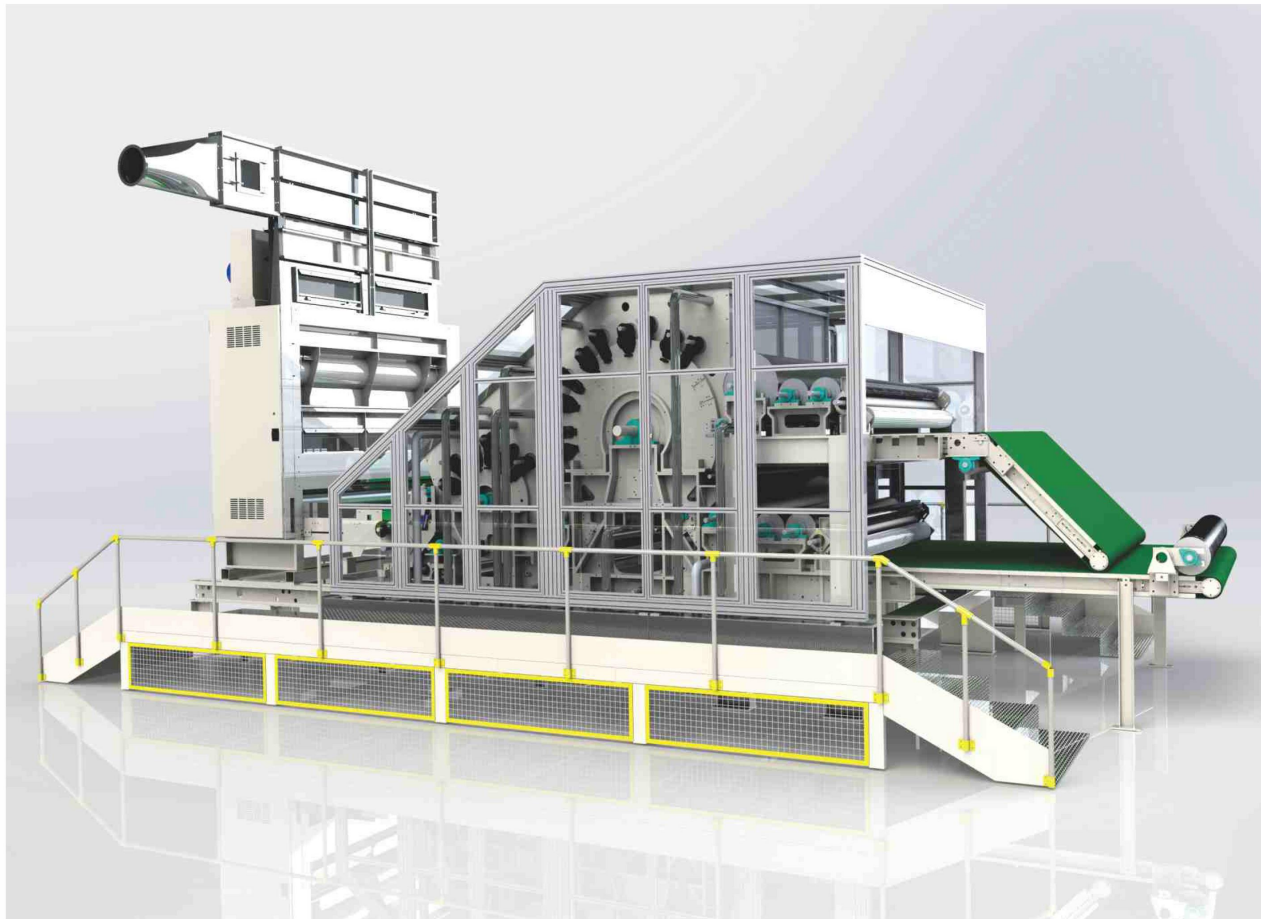
Working width: 2000mm 2500mm 3000mm 3750mm  
Capacity: ≤500kg/h ≤800kg/h ≤1000kg/h ≤1300kg/h

主要结构 Main Components

本机采用上、下储棉仓结构, 内部均有压力传感器, 通过对棉箱内的压力检测来控制横向棉层均匀度。铺网宽度可调。

There are two air pressure sensors install in the up and down hopper, controlling the cotton layer evenness. Output width is adjustable.

FZS-C2D2 梳理机-双锡林双道夫梳理机  
FZS-C2D2 CARDING MACHINE  
-DOUBLE CYLINDER & DOUBLE DOFFER



#### 产品应用 Application

涤纶、粘胶、尼龙、丙纶、玻璃纤维等多种纤维的梳理  
纤维规格: 1.5-20旦 × 38-65毫米

Various kinds of fiber such as polyester, viscose, nylon, PP, fiberglass, etc.  
Fiber spec: 1.5-20D × 38-65mm

#### 技术规格 Technical Data

工作宽度: 2000mm 2500mm  
锡林直径: 1230mm  
出网速度: ≤60m/min  
产量: ≤500kg/h ≤800kg/h

Working width: 2000mm 2500mm  
Dia. of Cylinder: 1230mm  
Web-output speed: ≤60m/min  
Capacity: ≤500kg/h ≤800kg/h



## FZS/III-C2D2- 高速梳理机

## FZS/III-C2D2- CARDING MACHINE-HIGH CAPACITY

## 产品应用 Application

涤纶、粘胶、尼龙、丙纶、海岛纤维等多种纤维的梳理

纤维规格: 0.5-20旦 × 38-65毫米

Various kinds of fiber such as polyester, viscose, nylon, PP and Sea-island fibers etc.

Fiber spec: 0.5-20D × 38-65mm

## 技术规格 Technical Data

工作宽度: 2500mm 3000mm 3800mm

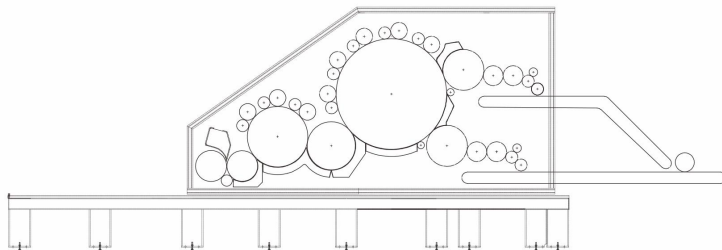
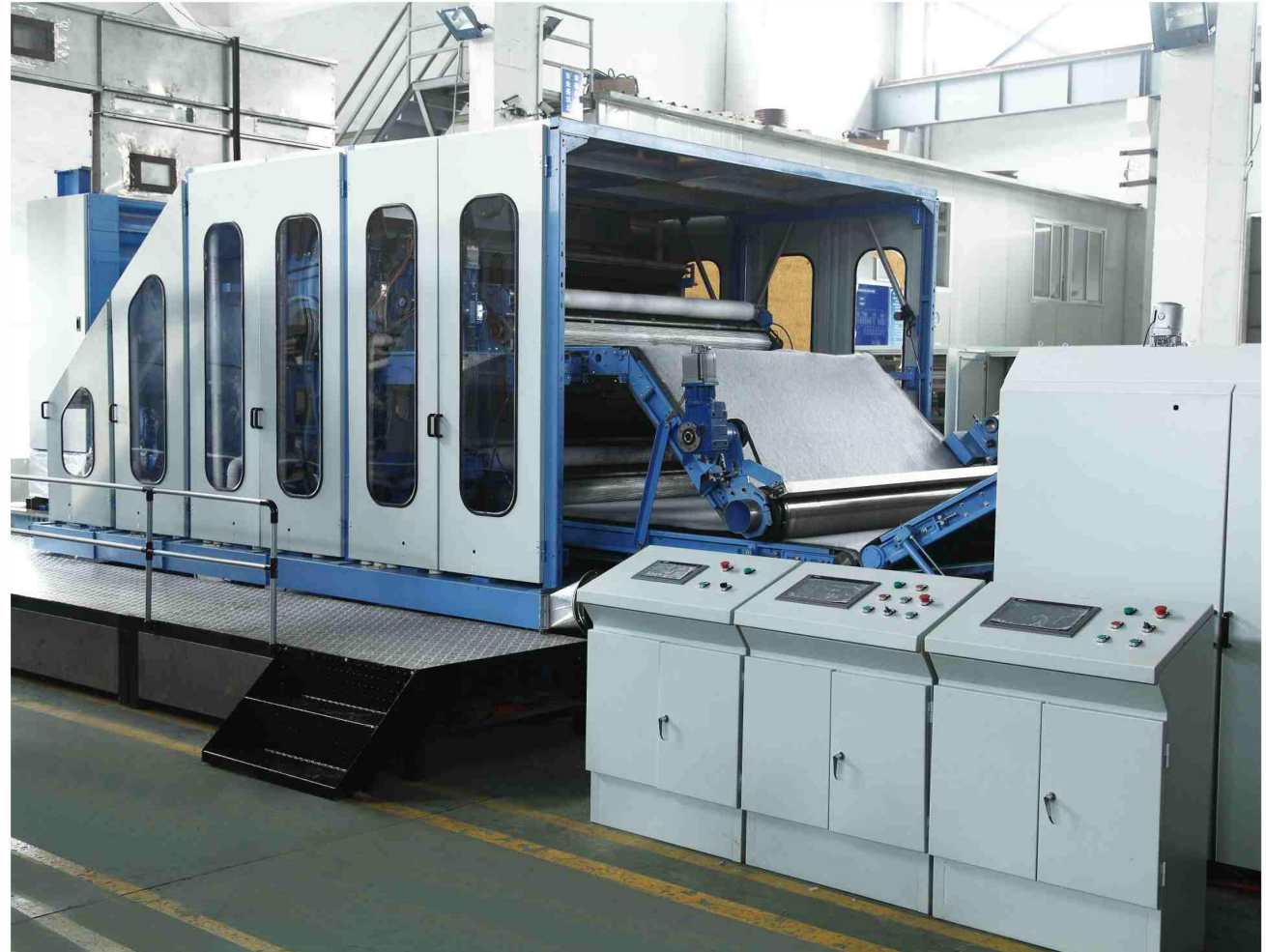
锡林直径: 1500mm

出网速度: ≤150m/min

Working width: 2500mm 3000mm 3800mm

Dia. of Cylinder: 1500mm

Web-output speed: ≤150m/min



FZQL - 气流成网  
FZQL - AIR LAID



产品应用 Application

本机适用于化纤、废纤、棉、麻、椰棕等原料的成网。  
This machine is mainly for forming the web of chemical fiber, waste fiber, cotton fiber, coconut and jute fiber.

技术规格 Technical Data

工作幅宽: 2500mm  
产 量:  $\leq 1500\text{kg/h}$   
成网厚度: 20-150mm  
Working width: 2500mm  
Capacity:  $\leq 1500\text{kg/h}$   
Web thickness: 20-150mm



FZP/II-交叉铺网机(改进型)  
FZP/II-CROSS LAPPER (NEW TYPE)



产品应用 Application

将梳理后纤网均匀折叠铺设成型后输送至下道工序，适用于针刺、热熔等非织造布生产。

Cross lapping the web after carding, then feed to the next process. Suitable for needle punching, thermal-bonding production.

技术规格 Technical Data

机幅：输入 $\leq 2700\text{mm}$ ，输出 $2500-9000\text{mm}$ ；

铺网速度： $\leq 60\text{m/min}$ ；

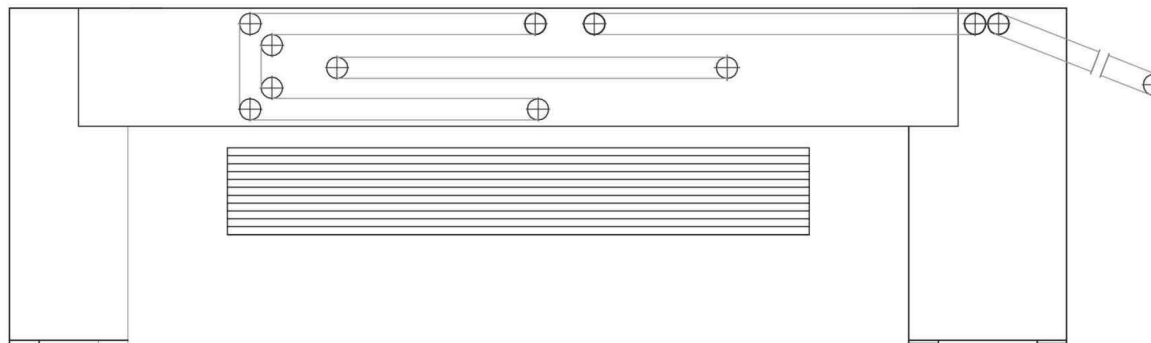
Width: input  $\leq 2700\text{mm}$ ， output  $\leq 2500-9000\text{mm}$

Spreading speed:  $\leq 60\text{m/min}$ ；

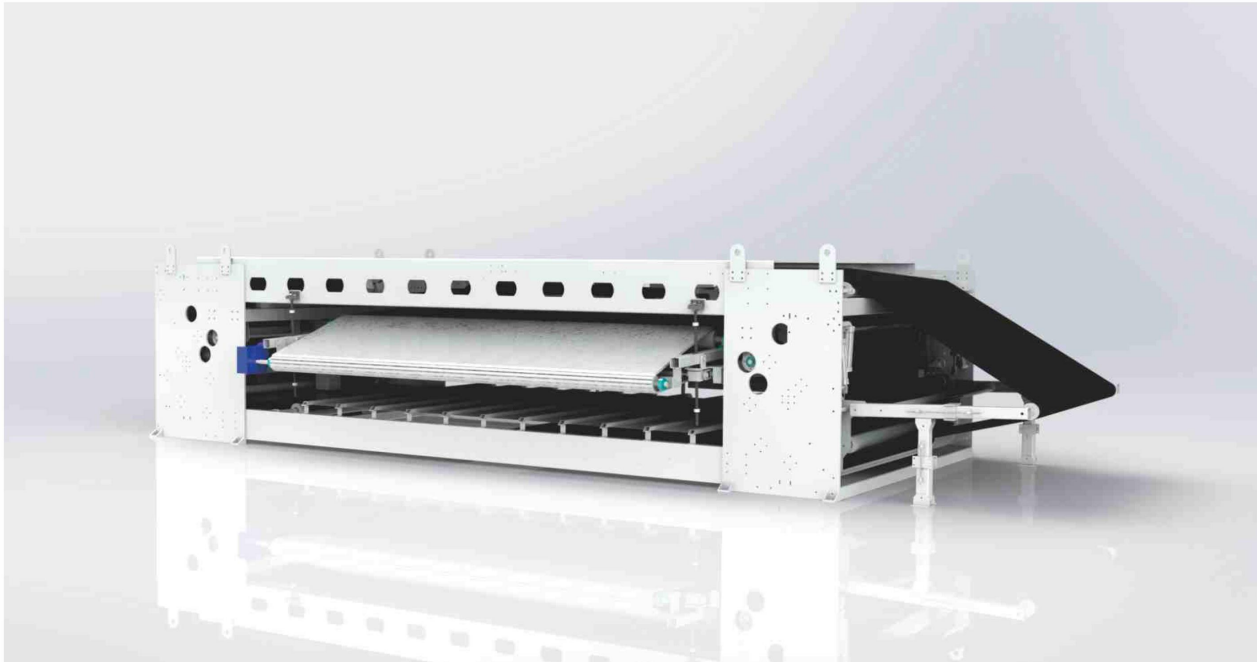
主要结构 Main Components

车架采用轻量化设计，机架全密封，降低惯性，减少气流的同时采用伺服控制。

Moving parts use lighter material, Frame is fully sealed. Using servo lapping.



FZ-CL-二碳帘高速铺网机  
FZ-CL-HIGH SPEED CROSS LAPPER-(2 CARBON LAYERS)

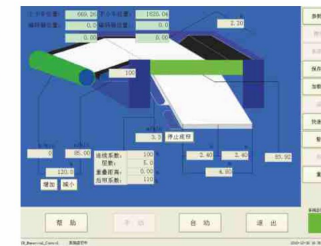


技术规格 Technical Data

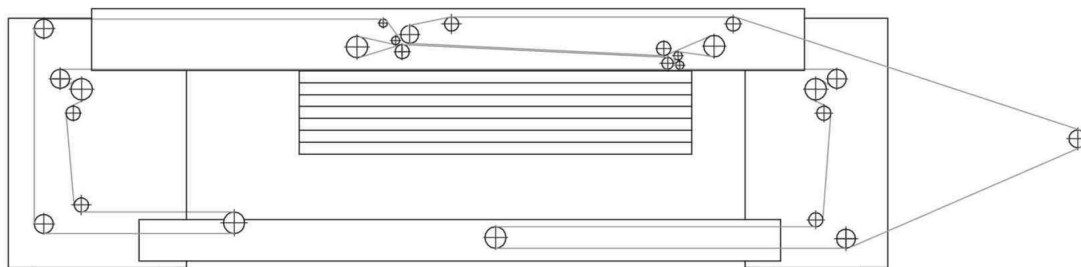
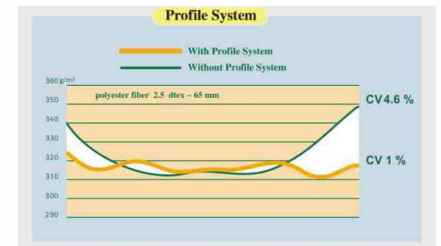
机幅：输入≤2500mm，输出2500-6000mm； Width: input ≤2500mm, output ≤2500-6000mm  
铺网速度：≤100m/min; Spreading speed: ≤100m/min;

主要结构 Main Components

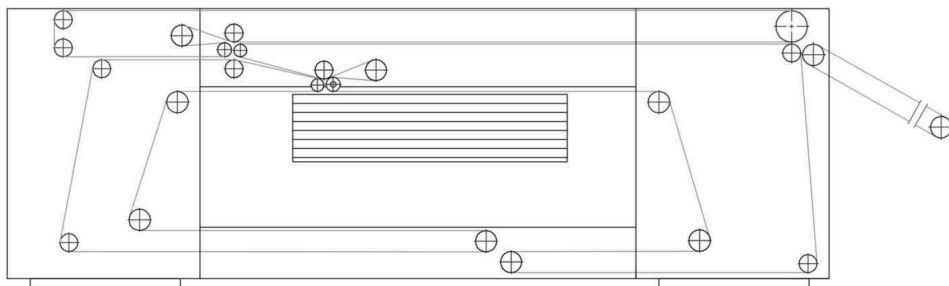
防静电碳帘、优质碳辊传动； Carbon conveyor lattice, Carbon rollers;  
大功率伺服+德国进口减速机； Servo control+gear reducer made in Germany;  
自动修正碳帘纠偏系统； Modifiable Carbon Conveyor guiding system;  
整机电脑控制+Profile成网控制系统。 Human-machine interface + Profile control system;



· 高速铺网控制界面



FZ-CL-五轴三碳帘高速铺网机  
FZ-CL-HIGH SPEED CROSS LAPPER-(3 CARBON LAYERS)



技术规格 Technical Data

机幅：输入 ≤2500mm，输出2500-6000mm；

铺网速度：≤150m/min；

Width: input ≤2500mm, output ≤2500-6000mm

Spreading speed: ≤150m/min;

主要结构 Main Components

全西门子伺服传动；

采用国际领先的profile系统控制；

采用三层碳帘传动；

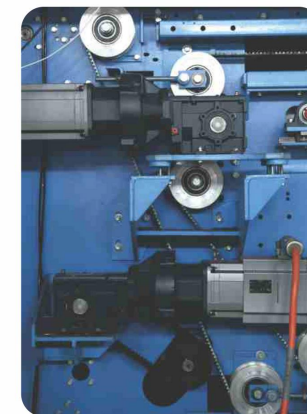
小车采用双伺服同步控制。

Totally servo motor control.

International leading profile control system;

Three carbon layers conveyor.

Lapping carriages driven by double servo motors.





## FZVP-直立铺网机 FZVP-VERTICAL LAPPER



### 产品应用 Application

将梳理后的纤网垂直折叠铺成一定厚度的纤网，提高产品弹性，适用床垫等非织造布的生产。

Lapping the web with vertical type after carding, then feed to the next process. Suitable for mattress production.

### 技术规格 Technical Data

幅 宽: 2200mm 2500mm  
铺网厚度: 15-100mm  
Working Width: 2200mm 2500mm  
Web thickness: 15-100mm



## FZQS-牵伸机 FZQS-DRAFTER



### 主要结构 Main Components

本机采用5组或9组单独变速马达机组传动。牵伸比可以独立调节。上下辊有升降及间距调节功能。

This machine is driven by 5 groups or 9 groups independent variable speed motor. The upper and lower roller can rise or fall down and the gap between the rollers is adjustable.

### 产品应用 Application

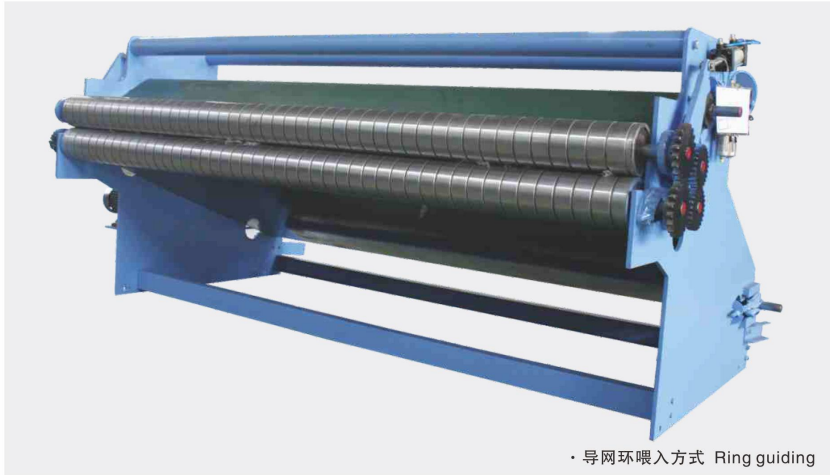
用于交叉铺网后的纤网牵伸，改变纤维分布结构，加快纤网输出速度。

Apply for web drafting after the cross lapper, Change the fiber distributing structure and increase the web output speed.

### 技术规格 Technical Data

机器幅宽: 2000-6500mm Working width: 2000-6500mm  
牵伸比: 1:1-1:3 Drafting ratio: 1:1-1:3

**FZW/I-喂入机**  
**FZW/I-FEEDING APPARATUS**



· 导网环喂入方式 Ring guiding

**FZW/II-喂入机**  
**FZW/II-FEEDING APPARATUS**



· 夹持式喂入 grip feeding

**产品应用 Application**

预针刺机纤网喂入  
Feed the voluminous webs to the needle punching zone with minimum draft.

**技术规格 Technical Data**

机幅: 2000-9000mm Working width: 2000-9000mm  
定量: ≤2500g/m<sup>2</sup> Web weight: ≤2500g/m<sup>2</sup>  
速度: 0.6-6m/min Speed: 0.6m/min-6m/min

**主要结构 Main Components**

手指式导网环喂入或PVC帘夹持喂入,整机可移动。  
Feeding by finger rings guide or grip lattice. The total system is movable.

**FZZ-中速针刺机**  
**FZZ-MIDDLE SPEED NEEDLE LOOM**



**产品应用 Application**

用于纤维网的预针刺定型,是在针刺无纺布生产中不可缺少的设备。

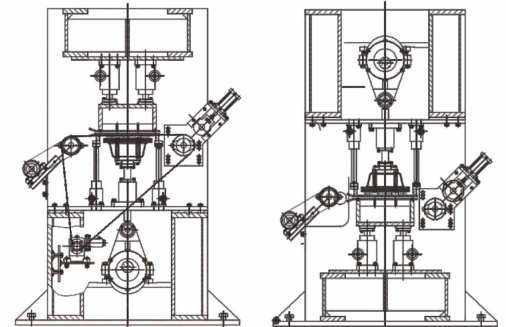
Used for reinforcing the web, it is the necessary equipment for needle punching production.

**技术规格 Technical Data**

工作宽度: 2000-9000mm Working width: 2000-9000mm  
针刺行程: 38-65mm Stroke: 38-65mm  
针刺频率: ≤800s/min Frequency: ≤800s/min

**主要结构 Main Components**

机架采用优质Q235-A钢板焊接, 铝合金针梁、镁铝合金/pu复合针板。  
The frame made from high quality metal plate. Aluminum alloy beam and magnesium aluminum alloy/pu combined needle beard.





**FZZ/AD-高速上针刺机**  
**FZZ/AD-NEEDLE LOOM( DOWN STROKE)**



**产品应用 Application**

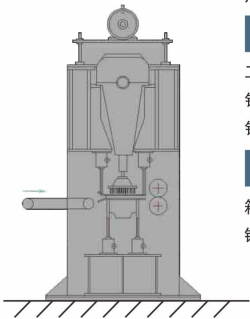
用于无纺布的针刺加固。 Used for reinforcing the fabric.

**技术规格 Technical Data**

工作宽度: 2000-9000mm	Working width: 2000-9000mm
针刺动程: 35-50mm	Stroke: 35-50mm
针刺频率: 800-1200s/min	Frequency: 800-1200s/min

**主要结构 Main Components**

箱体式结构, 机架采用拼接式, 铝合金针梁、镁铝合金/PU复合针板、气囊锁紧定位。	Unit crankshaft box, flat design frame, aluminum alloy beam and magnesium aluminum alloy/PU combined needle board locked firmly by the air tube.
---	--



**FZZ/AU-高速下针刺机**  
**FZZ/AU-NEEDLE LOOM( UP STROKE)**



**产品应用 Application**

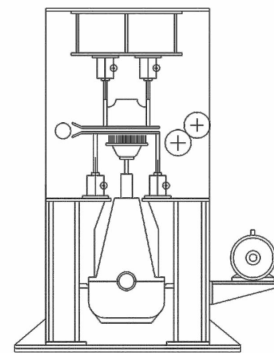
用于无纺布的反向针刺加固及修饰。 Used for reinforcing and surface finishing at another side of the fabric.

**技术规格 Technical Data**

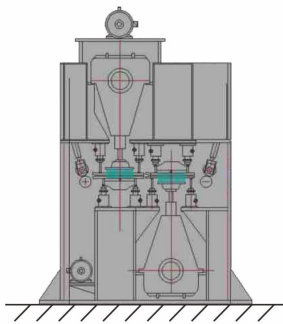
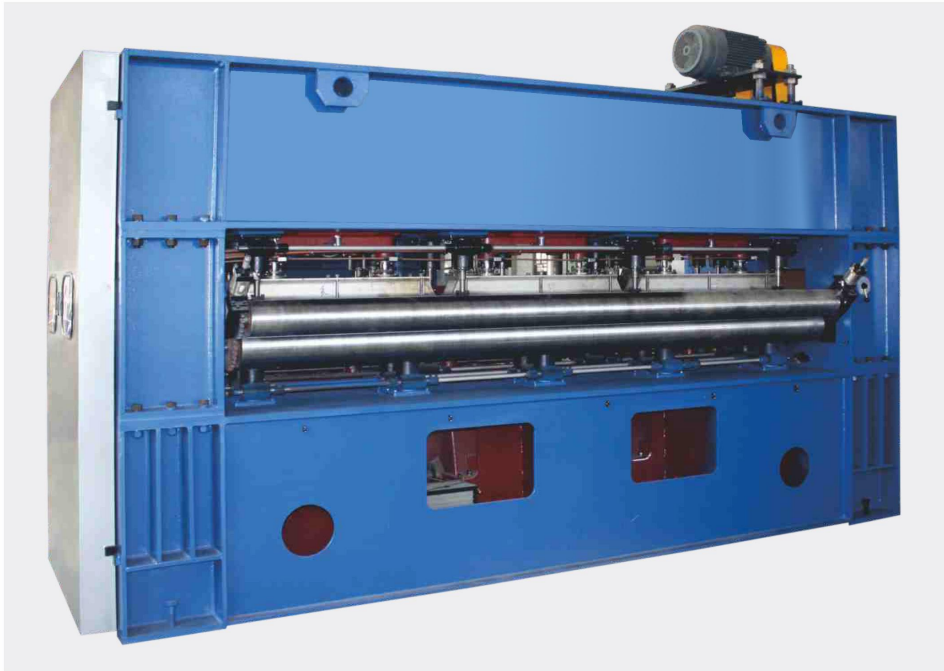
工作宽度: 2000-9000mm	Working width: 2000-9000mm
针刺动程: 35-50mm	Stroke: 35-50mm
针刺频率: 800-1200s/min	Frequency: 800-1200s/min

**主要结构 Main Components**

箱体式结构, 机架采用拼接式, 铝合金针梁、镁铝合金/PU复合针板、气囊锁紧定位。	Unit crankshaft box, flat design frame, aluminum alloy beam and magnesium aluminum alloy/PU combined needle board locked firmly by the air tube.
---	--



**FZZ/2A-对刺机**  
**FZZ/2A-UP & DOWN NEEDLE LOOM**



**产品应用 Application**

用于无纺布的针刺加固。 Used for reinforcing the fabric.

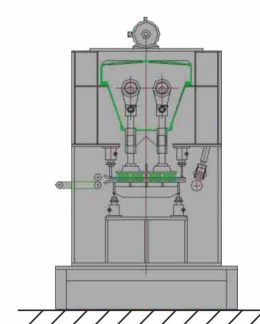
**技术规格 Technical Data**

工作宽度: 2000-9000mm Working width: 2000-9000mm  
 针刺动程: 35-50mm Stroke: 35-50mm  
 针刺频率: 800-1200s/min Frequency: 800-1200s/min

**主要结构 Main Components**

箱体式结构, 机架采用拼接式, 铝合金针梁、镁铝合金/PU复合针板、气囊锁紧定位。 Unit crankshaft box, flat design frame, aluminum alloy beam and magnesium aluminum alloy/PU combined needle board locked firmly by the air tube.

**FZZ/2B-双针区针刺机**  
**FZZ/2B-DOUBLE BOARD NEEDLE LOOM**



**产品应用 Application**

用于无纺布的针刺加固。 Used for reinforcing the fabric.

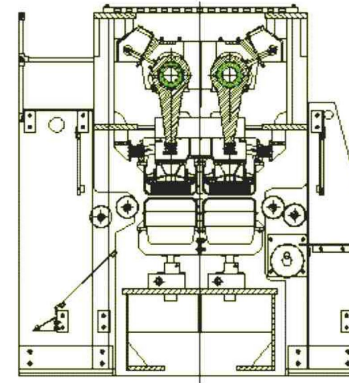
**技术规格 Technical Data**

工作宽度: 2000-9000mm Working width: 2000-9000mm  
 针刺动程: 35-50mm Stroke: 35-50mm  
 针刺频率: 800-1200s/min Frequency: 800-1200s/min

**主要结构 Main Components**

箱体式结构, 机架采用拼接式, 铝合金针梁、镁铝合金/PU复合针板、气囊锁紧定位。 Unit crankshaft box, flat design frame, aluminum alloy beam and magnesium aluminum alloy/PU combined needle board locked firmly by the air tube.

FZZ/N2B-高速双针区针刺机  
FZZ/N2B-HIGH SPEED NEEDLE LOOM(DOUBLE BOARDS)



产品应用 Application

用于制作高品质、高密度的无纺布。

Used for making the high density and high quality nonwoven fabric .

技术规格 Technical Data

工作宽度：2000-9000mm

针刺动程：30-60mm

针刺频率：≤1400s/min

Working width: 2000-9000m

Stroke: 30-60mm

Frequency: ≤1400s/min

主要结构 Main Components

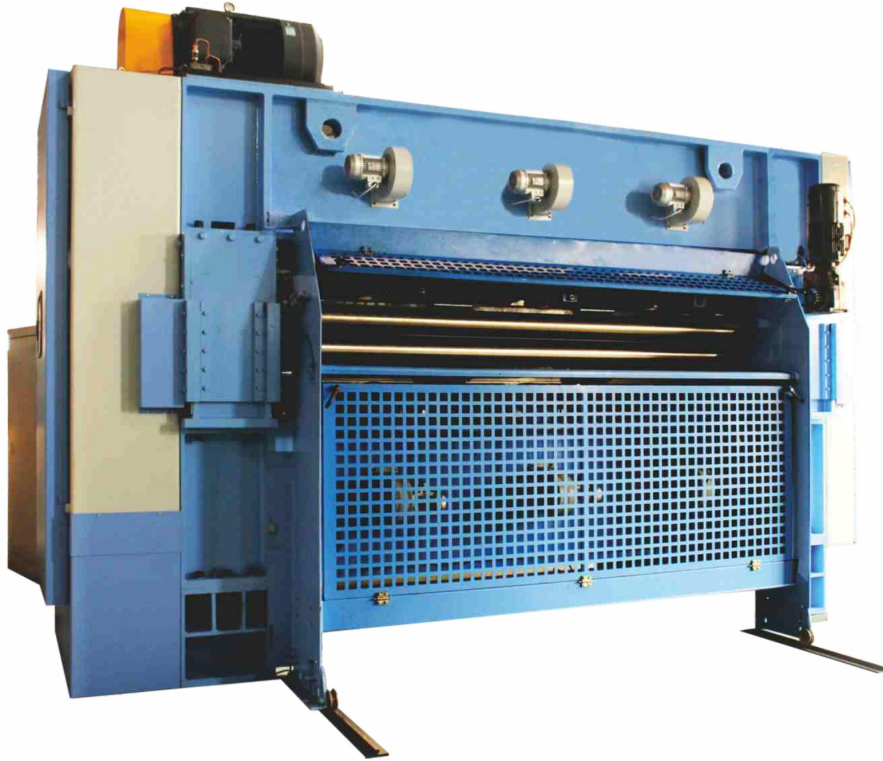
低噪音、低振动、运转平衡，摇臂齿条机构寿命长，无漏油，主要分段，双轴平衡结构。

Low noise, low shaking, equilibrium running, Rocker rack long life, no oil leak. Main axle section, double shaft balanced structure, high stability.



## FZZ/N4B-高速四针区针刺机

## FZZ/N4B-HIGH SPEED NEEDLE LOOM(FOUR BOARDS)



## 产品应用 Application

用于制作高品质、高密度的无纺布。

Used for making the high density and high quality nonwoven fabric .

## 技术规格 Technical Data

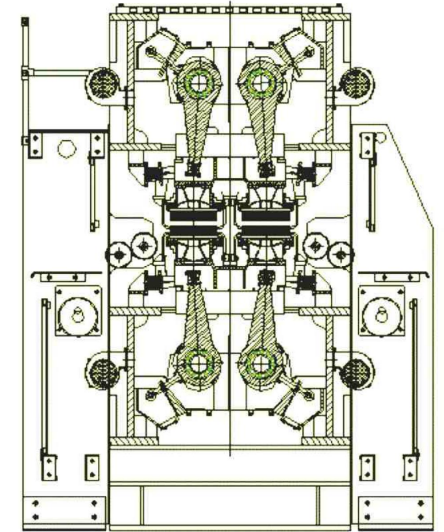
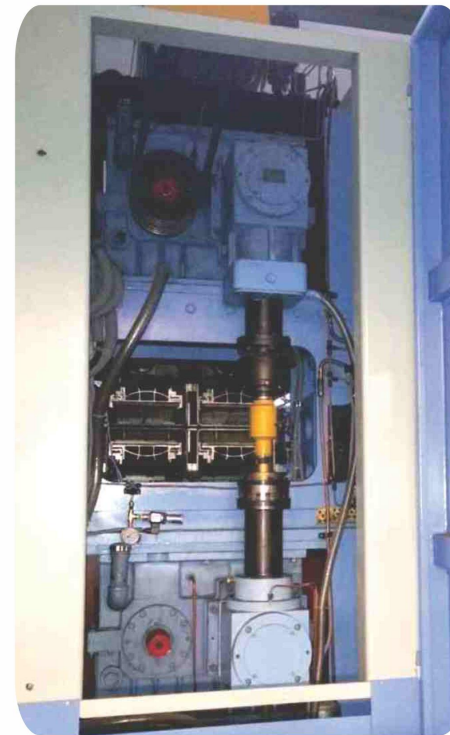
工作宽度：2000-9000mm  
 针刺动程：30-60mm  
 针刺频率：1000-1500s/min

Working width: 2000-9000m  
 Stroke: 30-60mm  
 Frequency: 1000-1500s/min

## 主要结构 Main Components

主轴运动采用迪罗摇臂式导向结构，保证高速运转，无漏油。采用铝合金针梁针板，气囊锁紧定位。

The main shaft working system with oscillating and rotating mass balance,the rocker arm beam guiding system to make sure of no oil leaking,even in high speed. Aluminum alloy beam and magnesium aluminum alloy needle board, fixed by air pressure.



## FZZ/H-环形针刺机

## FZZ/H-PAPER CARPET NEEDLE LOOM MACHINE



## 产品应用 Application

用于制造造纸用地毯。

Used for making paper carpet fabric.

## 技术规格 Technical Data

工作宽度: 2000-9000mm

Working width: 2000-9000mm

针刺动程: 40mm

Stroke: 40mm

针刺频率: 800-1200s/min

Frequency: 800-1200s/min

## 主要结构 Main Components

箱体式结构, 双轴平衡, 铝合金针梁、镁铝合金/PU复合针板、气囊锁紧定位。

Unit crankshaft box, double crank shaft drives, aluminum alloy beam and magnesium aluminum alloy/PU combined needle board locked firmly by the air tube.

## FZR-热轧机

## FZR-CALENDER



## 产品应用 Application

用于非织造布产品表面处理, 并能达到所要求的表面效果与厚度。

Apply for surface treatment of nonwoven fabric production.

## 技术规格 Technical Data

工作宽幅: 2000-9000mm

Working width: 2000-9000mm

结构形式: 二辊、三辊

Type: two rollers, three rollers

机械速度: 5-25m/min

Mechanical speed: 5-25m/min

辊面温度:  $\leq 250^{\circ}\text{C}$

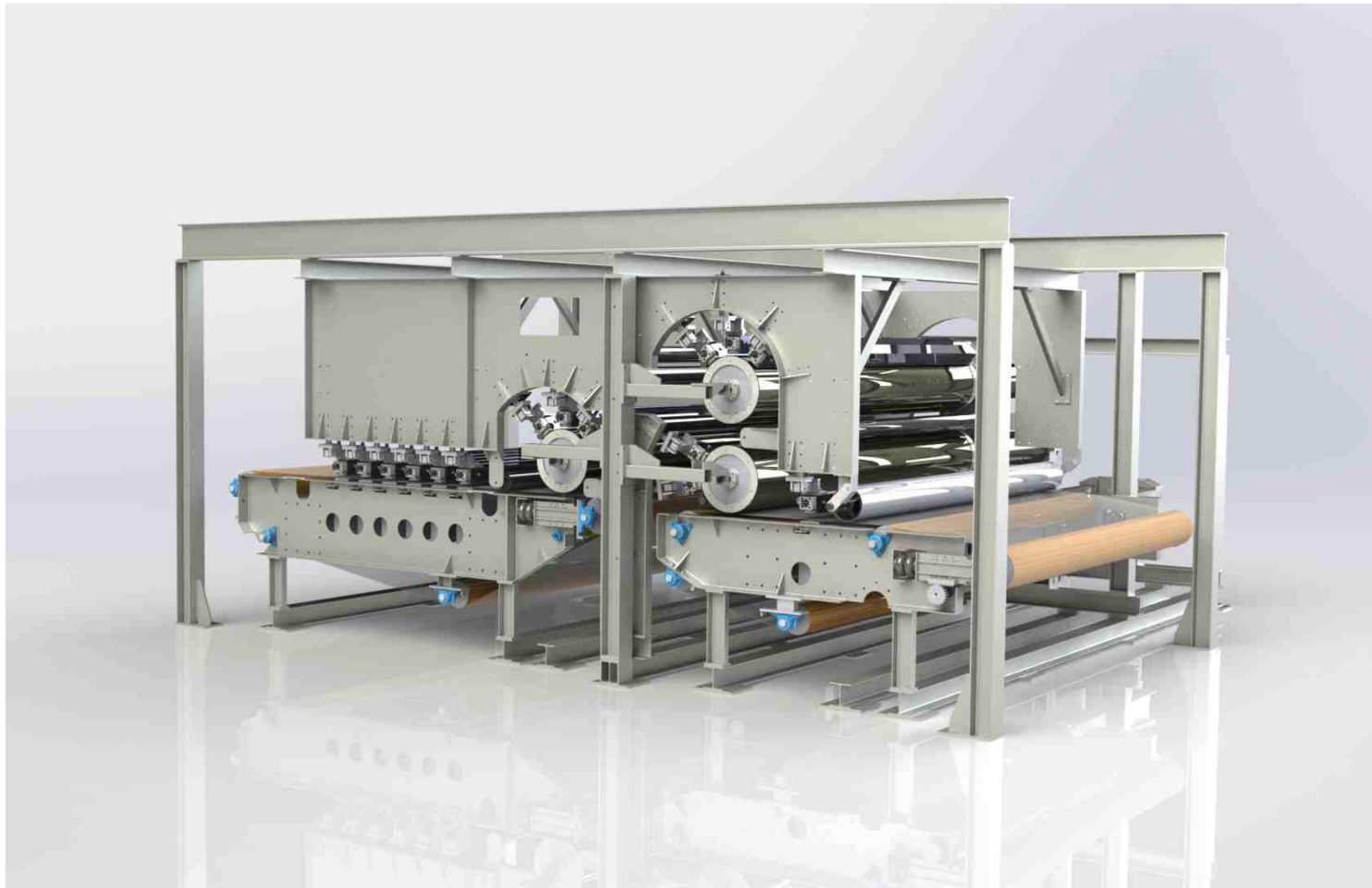
Surface temp:  $\leq 250^{\circ}\text{C}$

温差:  $\leq \pm 1^{\circ}\text{C}$

Temp. Difference:  $\leq \pm 1^{\circ}\text{C}$



## FZSC-I 水刺机 FZSC-I SPUNLACE MACHINE



### 技术规格 Technical Data

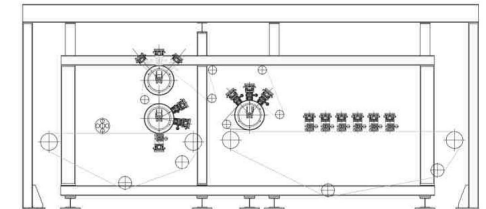
工作宽度: 2500 3500mm

Working width: 2500 3500mm

### 产品应用 Application

本生产线适用于生产各种医用、卫生材料、清洁、护肤、即弃材料，皮革基布、过滤材料等。

It is mainly for produce medical sanitary material, cleaning, beautify skin, one-off material, artificial leather substrates, filter media, etc.



### FZCB-张力储布架 FZCB-ACCUMULATOR

#### 技术规格 Technical Data

有效幅宽: 1500mm-9000mm;  
 储布长度: 约3m-20m;  
 配重式调节储布辊;  
 Working width:1500-9000mm  
 Storage quantity:3m-20m  
 Counterpoised storage.



### FZQ- 切边成卷机 FZQ- CUTTING & WINDING



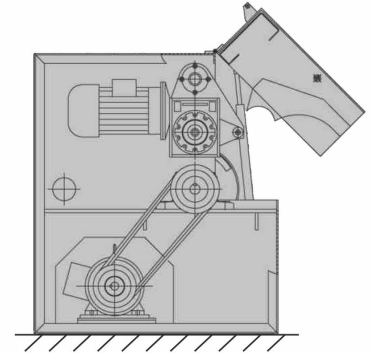
#### 技术规格 Technical Data

适用于多种类型的无纺布卷取与切断, 自动计数。  
 Mainly for cutting and coiling several kinds of nonwoven fabric, automatic meter counting.  
 工作宽度: 2000-9000mm  
 Working width: 2000-9000mm

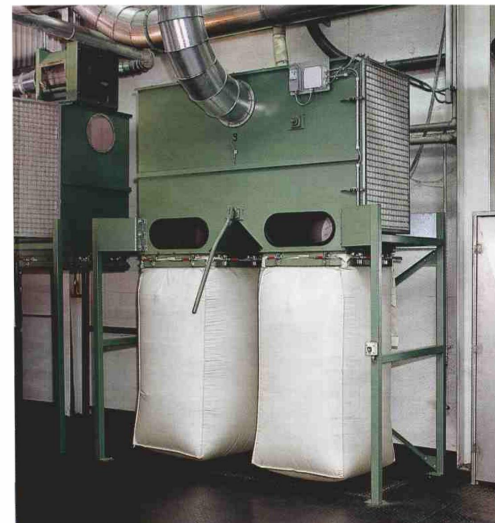
### FZBK/ I -边角料开松机 FZBK/ I -RECYCLING OPENER



工作宽度: 400-600mm  
 Working width: 400-600mm  
 适用于无纺布下角料开松。  
 Suitable for opening the leftover fabrics.



### FZDB-储尘仓 FZDB-DUST BAG



适用于吸风除尘。  
 Suitable for collecting dust.

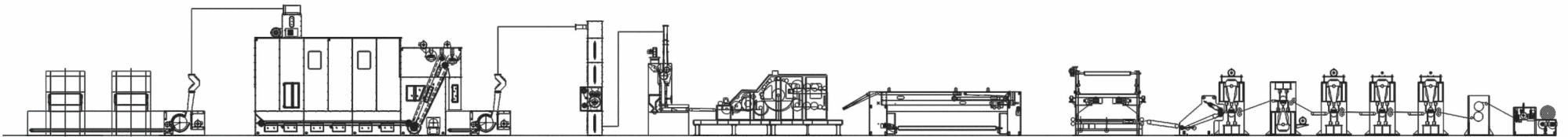


## FZ-汽车内饰非织造布生产线 FZ-AUTOMOTIVE INTERIORS NONWOVEN PRODUCTION LINE

### 产品应用 Application

汽车顶棚呢、汽车地毯、行李箱、衣帽架等  
汽车用无纺布。

Automotive headliner, carpet and Automotive trunk etc.



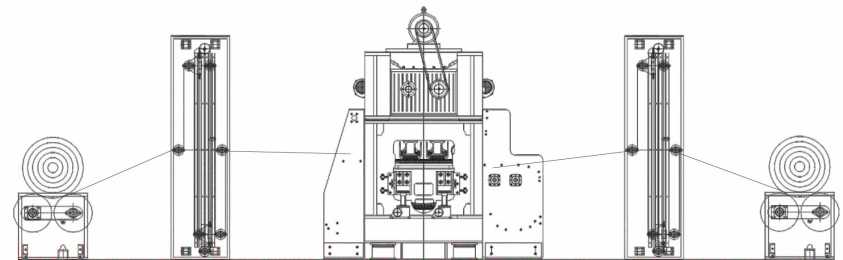


FZ-起绒针刺生产线  
FZ-VELOUR PRODUCTION LINE

产品应用 Application

汽车地毯起绒、家用地毯起绒。

Making the velour fabric such as car carpet fabric, family carpet.



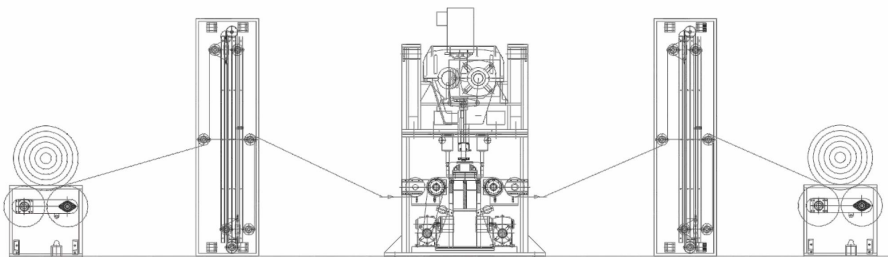
FZZ/T-提花针刺生产线  
FZZ/T-JACQUARD LINE



产品应用 Application

用于制作无纺布提花，适用于家用地毯及装饰面料等。

Used for making the design on the fabric surface such as family carpet and decoration fabric.





## FZ-汽车内饰件自动压模生产线&amp;等密度产品

## FZ-AUTO INTERIOR TRIMMING AUTOMATIC

## PRODUCTION LINE&amp;EQUAL PENSITY PRODUCT



## 产品应用 Application

适用于汽车顶棚、汽车地毯的模压成型。

Suitable for automobile roof and carpet moulding .

工作台面: 2500mmX1200mm

生产节拍: 50-70s

装机功率: 255kw

Dimension of worktable: 2500mmX1200mm

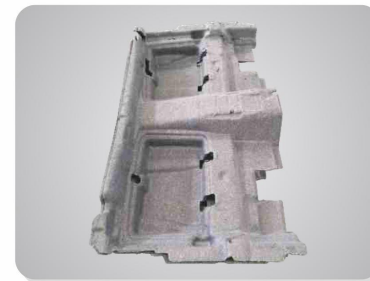
Tatk Time: 50-70s

Installed Power: 255kw



等密度产品生产节拍: 40s左右

EQUAL PENSITY PROPUCTTatk Time: 40s





FZ-针刺过滤材料生产线  
FZ-FILTER FABRIC LINE

产品应用 Application

高密度高质量针刺过滤材料。

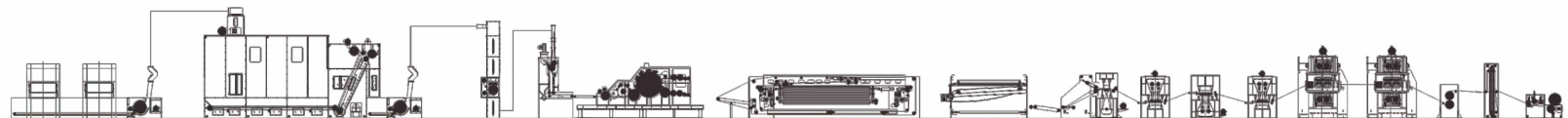
Making the high density and high quality filter material.



常温过滤生产线



高温过滤生产线

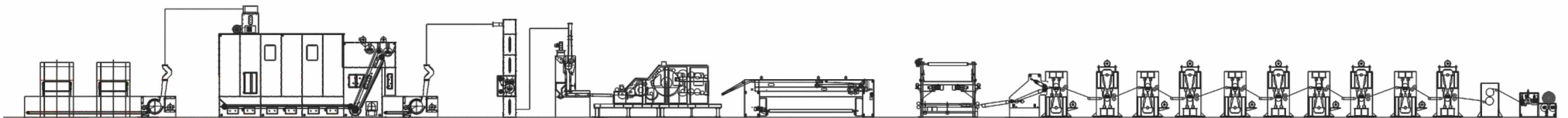
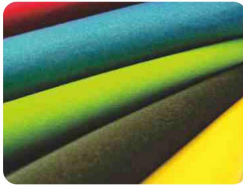


## FZ-针刺皮革基布生产线 FZ-LEATHER BASIC FABRIC LINE

### 产品应用 Application

高密度高质量PU、PVC皮革基布，适用于鞋材、箱包、座椅、沙发、服装面料等。

High density, high quality PU、PVC artificial leather fabric, using in shoe material, chair, sofa and garment fabrics.

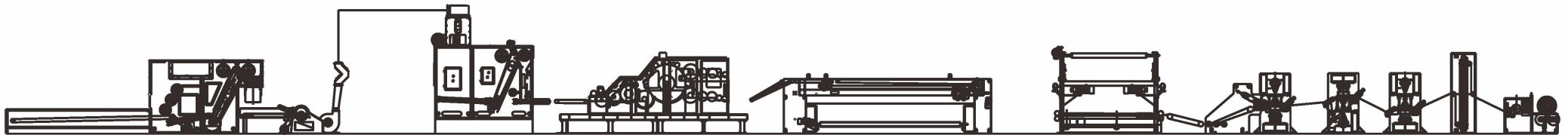
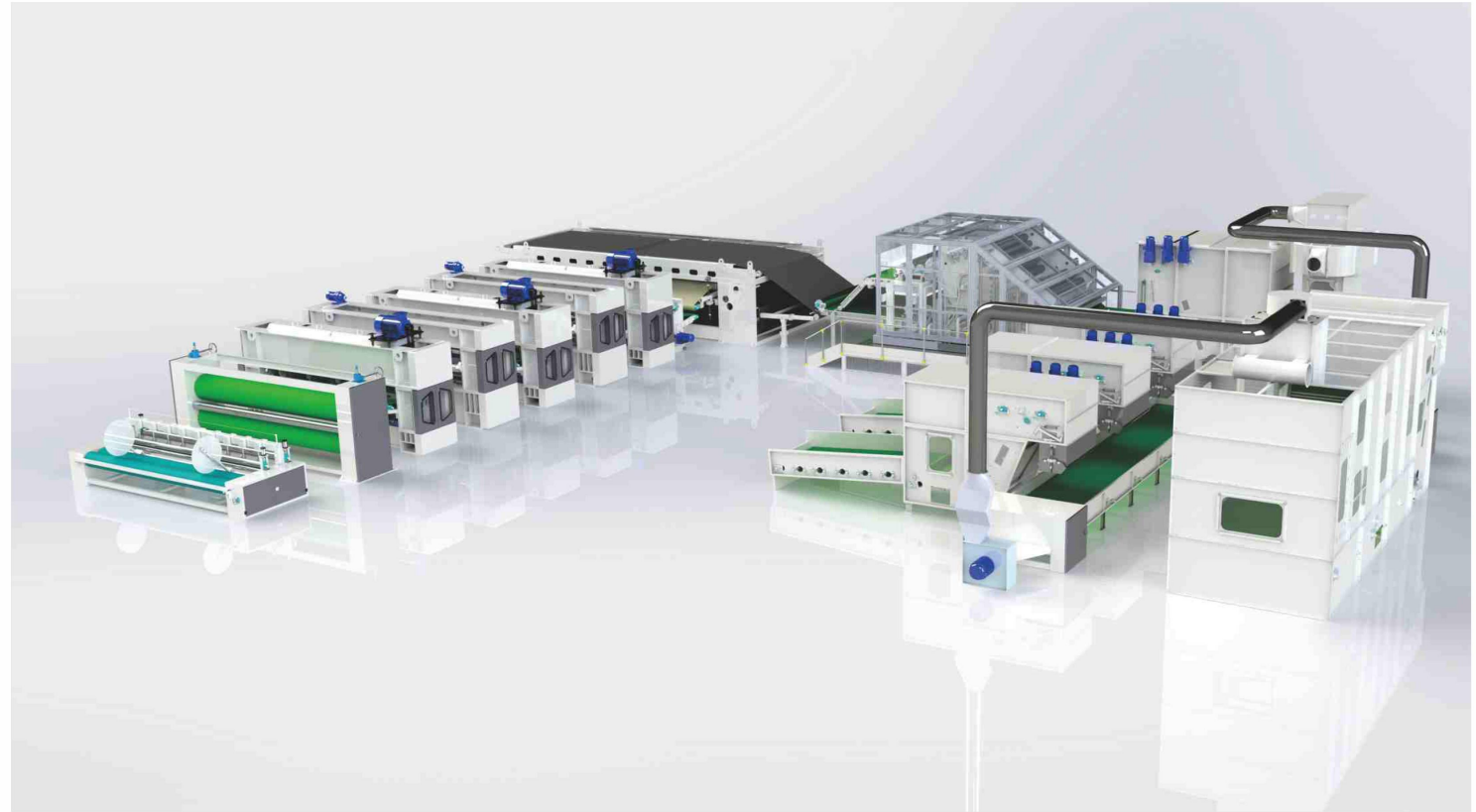


## FZ-土工布生产线 FZ-GEOTEXTILE FABRIC LINE

### 产品应用 Application

宽幅土工布，广泛用于高速公路、铁路、江海岸堤等工程建设。

Wide geotextile fabrics used in protect construction of expressway, railway and sea bunding .



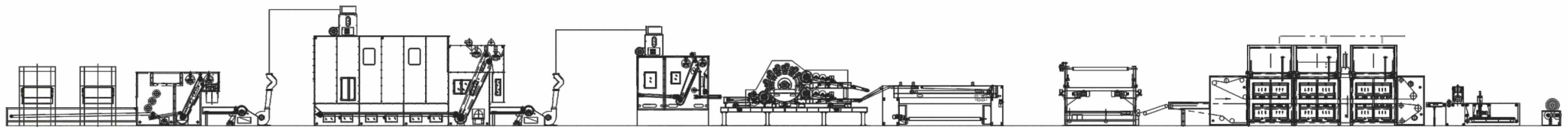


## FZ-无胶棉、硬质棉生产线 FZ-NON-ADHESIVE, HARD MATTRESS PRODUCTION LINE

### 产品应用 Application

适用于高级床垫、服装家具、过滤材料等。

Used in bedding, furniture and filters.



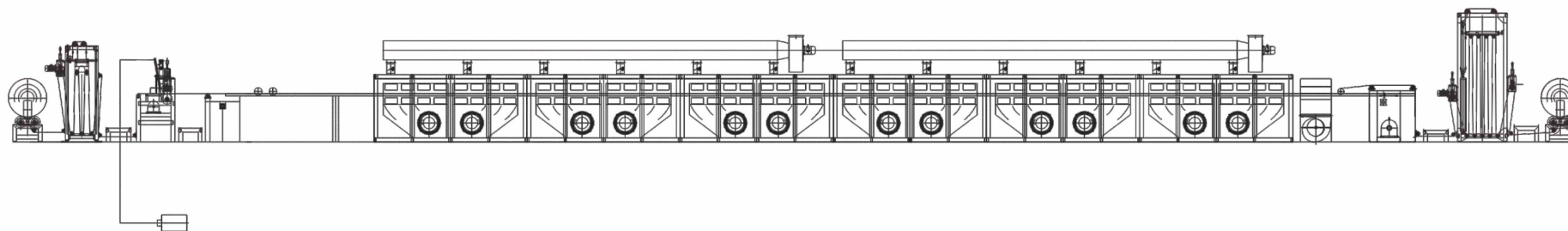
### FZ-拉幅定型生产线 FZ-STENTER OVEN LINE



#### 产品应用 Application

用于非织造布的后整理加工，如：各种针刺地毯，过滤材料，鞋包内衬，中底板，油毡基布、工业用布等。

This line is used as finish treatment process, it is main for treat and finalize the basic nonwove fabric, such as: needle punch carpet, shoe material, filter media, and industrial nonwoven, etc.



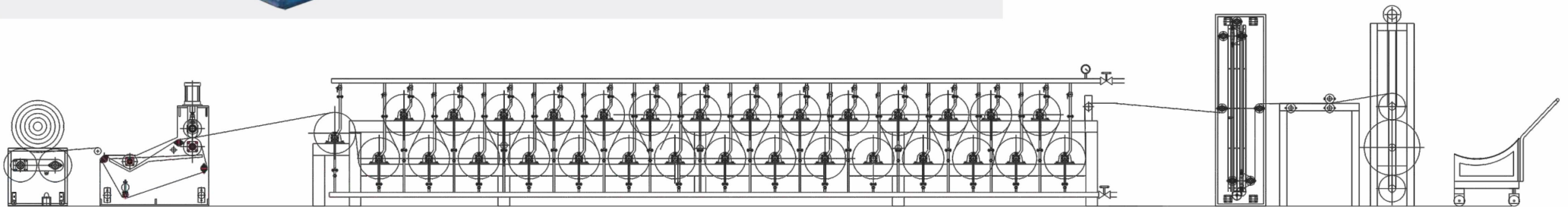


## FZ-浸胶烘干生产线 FZ-DIPPING & HEATING LINE



### 产品应用 Application

本生产线为专门的后处理设备，主要用于生产鞋材、油毡基布、内衬等产品。  
This line is used as finish treatment process, it is main for making shoe material, asphalt fabric and lining fabric.





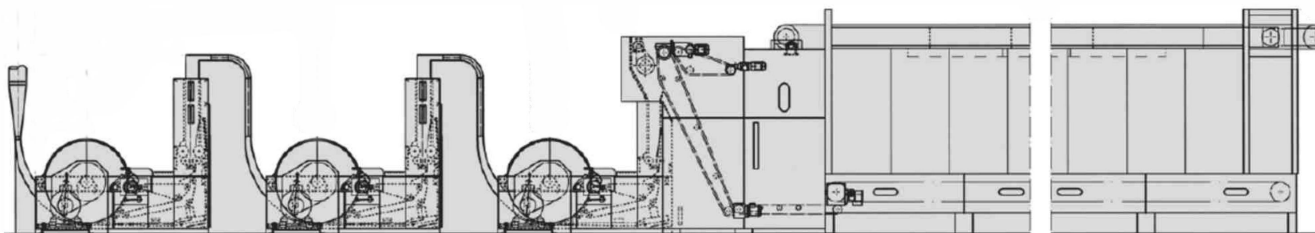
FZ-废料开松系统  
FZ-WASTE FIBER OPENING SYSTEM



产品应用 Application

本生产线是我公司与博尼诺公司合作产品，专业生产处理各种废料，具有高效高产节能环保等特点。

This line is cooperated with BONINO COMPANY, it is mainly for recycling kinds of waste fiber.



## FZ-熔喷无纺布生产线

## FZ-MELT-BLOWN NONWOVEN PRODUCTION LINE



## 产品应用 Application

熔喷法生产线是以合成高聚合物为原料，经过熔融纺丝后直接成网，形成性能独特的熔喷无纺布。广泛用于过滤材料、保暖填充材料、医用卫材、擦拭材料等。

The melt-blown non-woven production line makes use of synthetic high polymer as materials, through melting and spinning, the materials forms fiber web directly, and produces unique performance non-woven fabrics. The melt-blown fabric is widely applied to filtration material, padding material, medicine material and wiping materials.

## 技术规格 Technical Data

适用原料：PP、PET

产品宽度：1000mm、1600mm

产品克重：10-150g/m<sup>2</sup>

纤维直径：2-5 μm

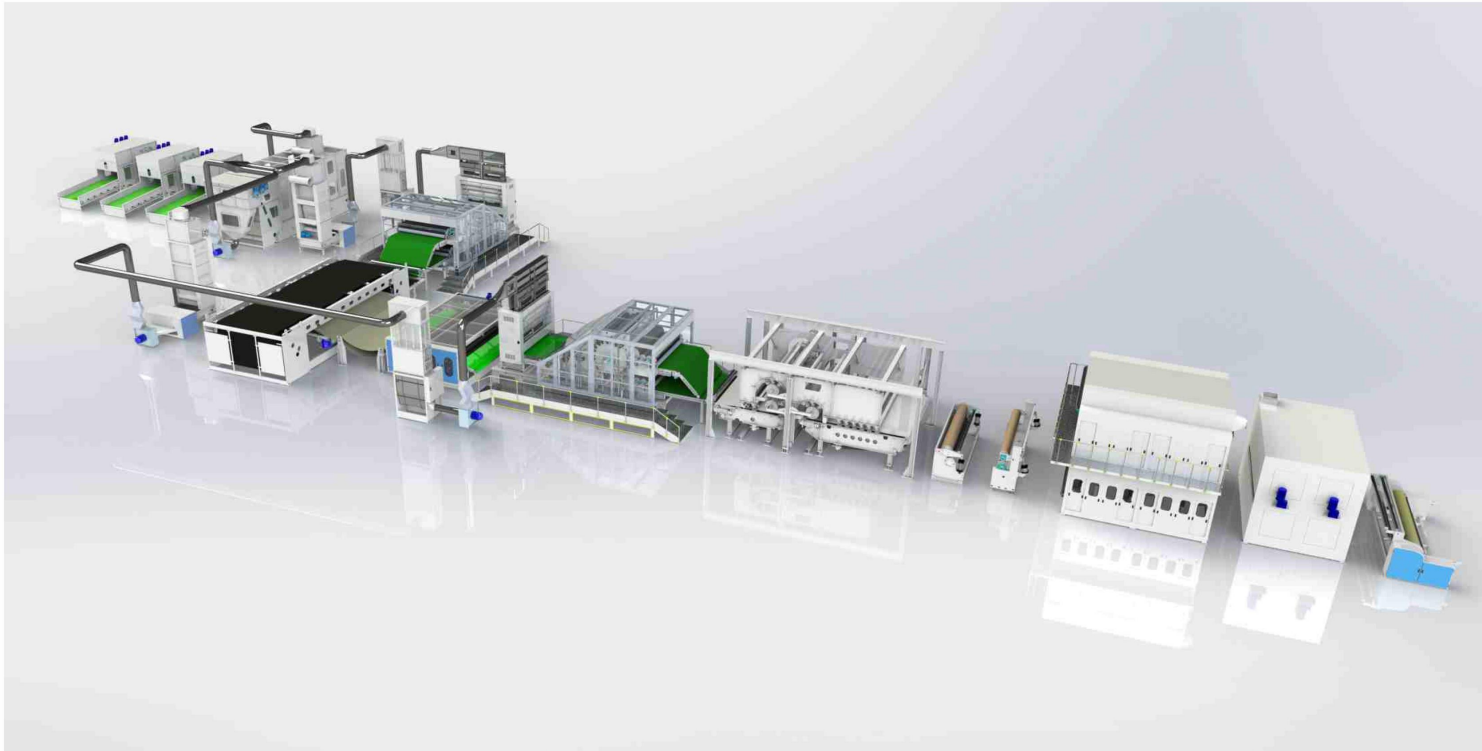
Materials: PP, PET.

Working width: 1000mm, 1600mm

Product grammage: 10-150g/m<sup>2</sup>

Fiber Dia.: 2-5 μm

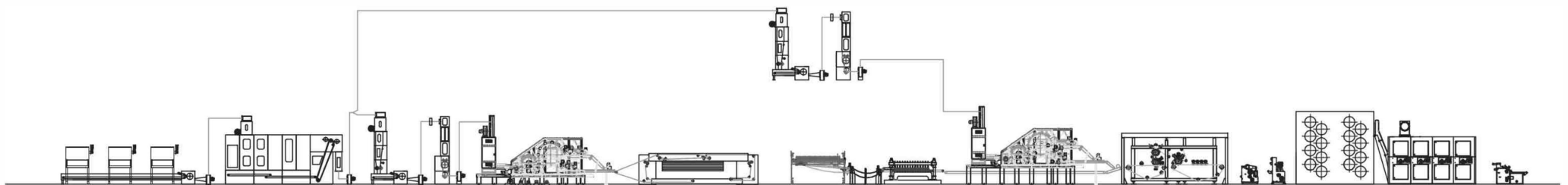
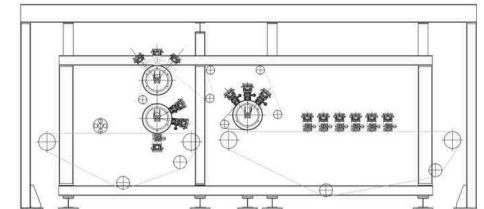
FZ-水刺生产线  
FZ-SPUNLACE LINE



产品应用 Application

本生产线适用于生产各种医用、卫生材料、清洁、护肤、即弃材料，皮革基布、过滤材料等。

It is mainly for produce medical sanitary material, cleaning, beautify skin, one-off material, artificial leather substrates, filter media, etc.





## FZ-实验生产线 TESTING PRODUCTION LINE



### 产品应用 Application

该生产线为实验性生产线，具有适用性广、占地面积小、经济环保、清洁卫生、操作方便、能耗低等特点；广泛适用于工厂打样、科研院校教学、实验研制单位开发新产品。

The production line is especially for experimental production line, which has features of wide applicability, cover an small area , economic and environmental protection, easy clean, convenient operation, low energy consumption; It is widely used in the factory proofing, colleges and universities teaching, experiment research units to develop new products.

### 技术规格 Technical Data

工作宽度:  $\leq 1000\text{mm}$

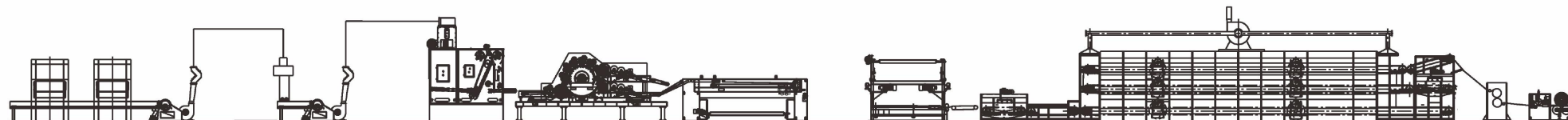
Working width:  $\leq 1000\text{mm}$

### 合作院校 Cooperative Academy

常州纺织技术学院  
南通大学  
南京工业大学  
上海东华大学  
嘉兴学院

CHANGZHOU TEXTILE GARMENT INSTIUTE  
NANTONG UNIVERSITY  
NANJING TECH UNIVERSITY  
DONGHUA UNIVERSITY  
JIAXING UNIVERSITY

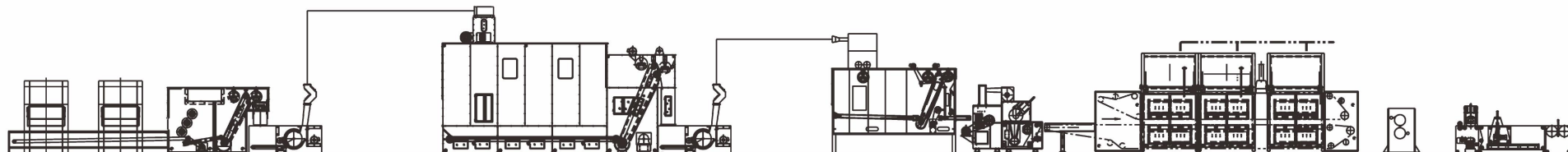
喷胶棉生产线 SPRAY BONDING & HOT MELTING LINE



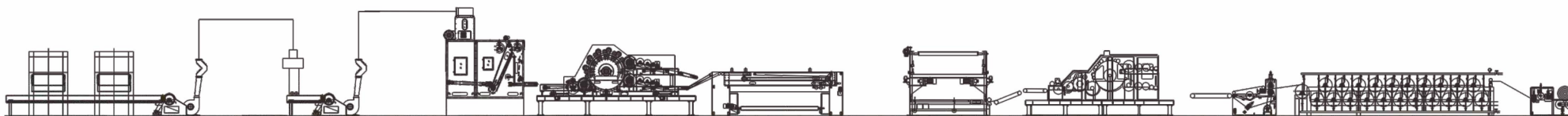
百洁布生产线 SCOURING PAD CLEANING MATERIAL PRODUCTION LINE

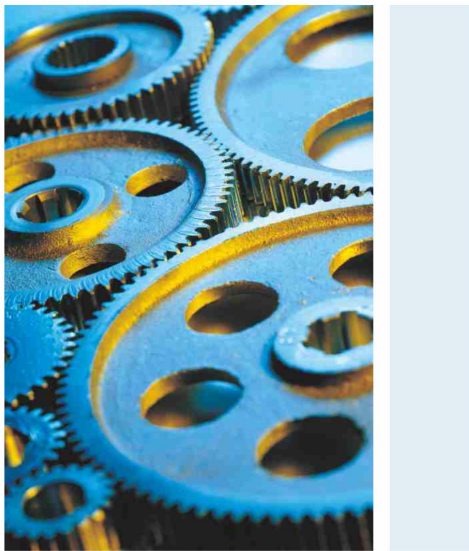


废布吸音棉生产线 SOUND INSULATION PRODUCTION LINE



薄形无纺布生产线 INTERLINING FABRIC LINE





## **ADINA WEICHENG**

成熟的工艺、严谨的作风和完善的质量体系，全面保障从原料采购、产品制造至销售发运各个环节有效而规范的运行，而与国际同步，无论我们的客户处在世界哪个城市，都会得到专业的技术咨询、广泛的最新产品资料及一流的售后服务。

The business has a mature technology, a rigorous style and a perfect quality system, so it fully makes sure operation efficient and standardized from raw materials sourcing to product manufacturing, sales and shipping. Wherever our international customers are in the world, we will provide them with professional technical consulting, a wide range of information about latest products and first-class after-sales service.